

A low-angle, upward-looking photograph of several modern skyscrapers with glass facades, set against a blue sky with light clouds. The buildings are arranged in a way that they appear to converge towards the top center of the frame, creating a strong sense of verticality and depth. The overall color palette is a muted, light blue.

*Pseudotryblidium neesii*, a fungus  
associating lichens ?

Ave Suija, University of Tartu

---

## /Facts on *Pseudotryblidium neesii*

- First mentioned as *Peziza lecanorae* Nees (1836), but mess with names
- Always grows on *Abies alba* (in Europe)
- Always grows with epiphytic lichens
  - *Loxospora elatina*, *Phlyctis argena*,
  - *Ochrolechia* spp., *Pertusaria* spp.
- So ... typical lichenicolous fungus ?



Photos: Paul Diederich

... do not trust what your eyes say

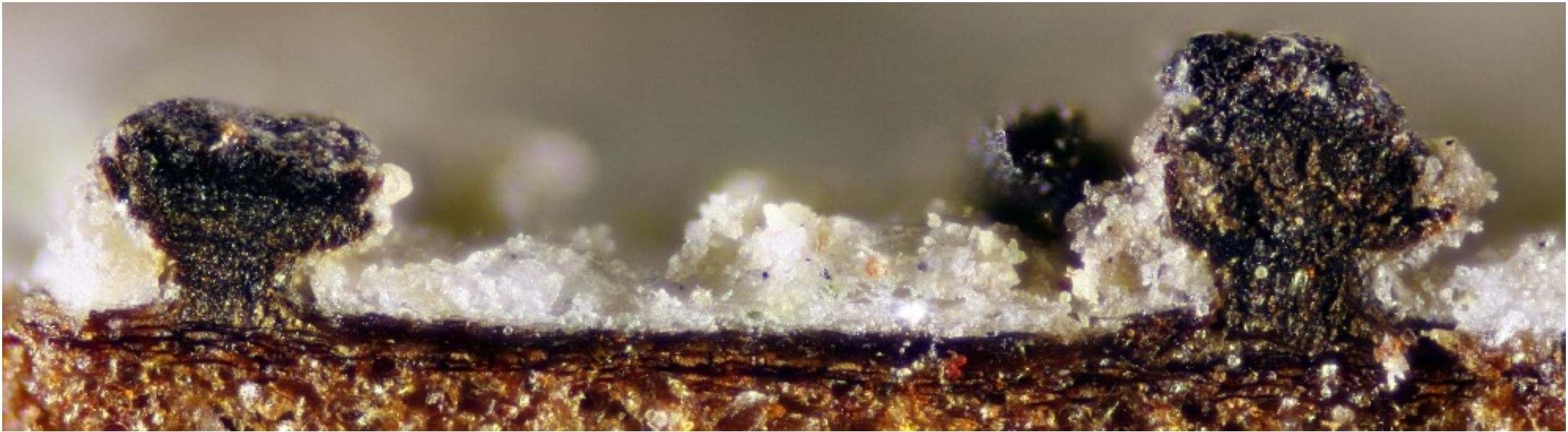
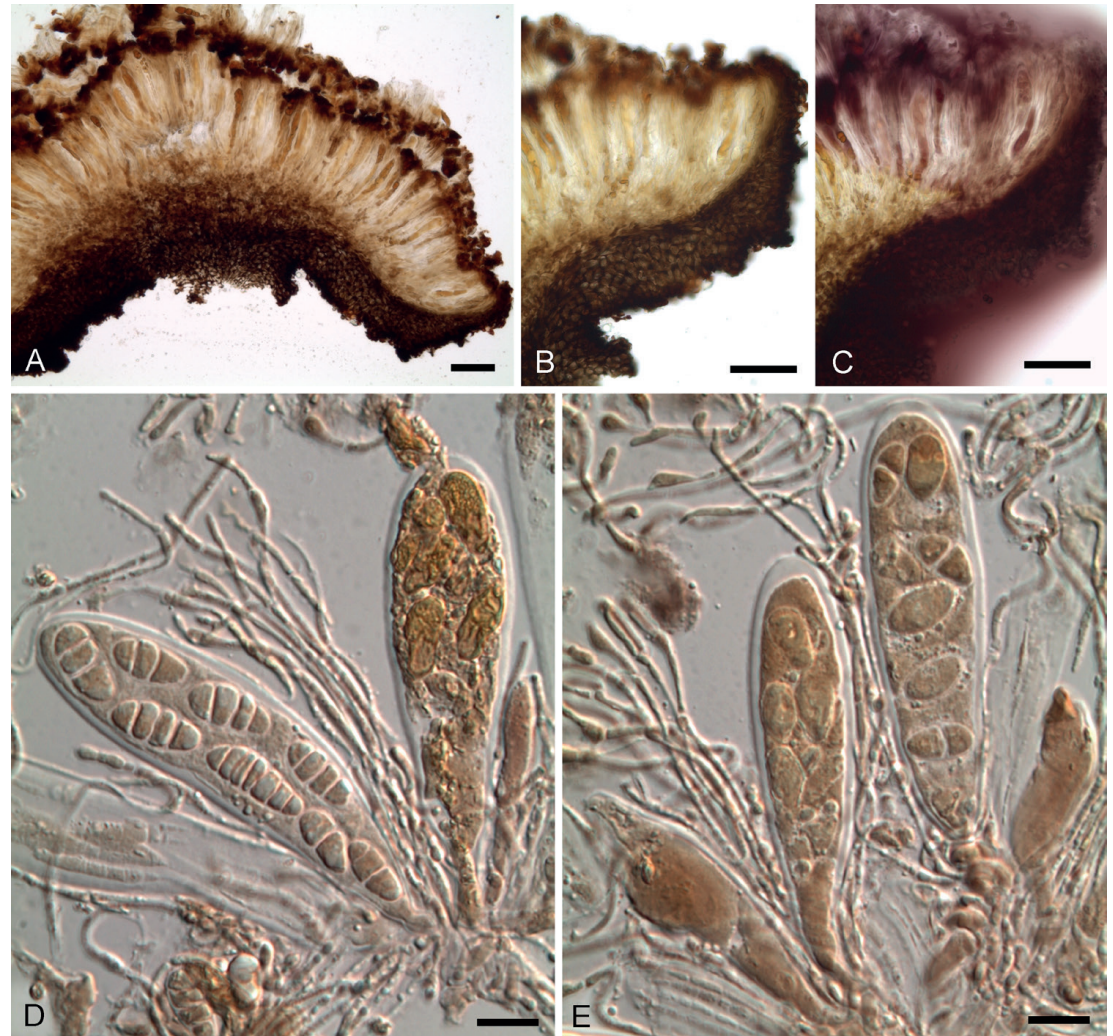


Photo: Paul Diederich

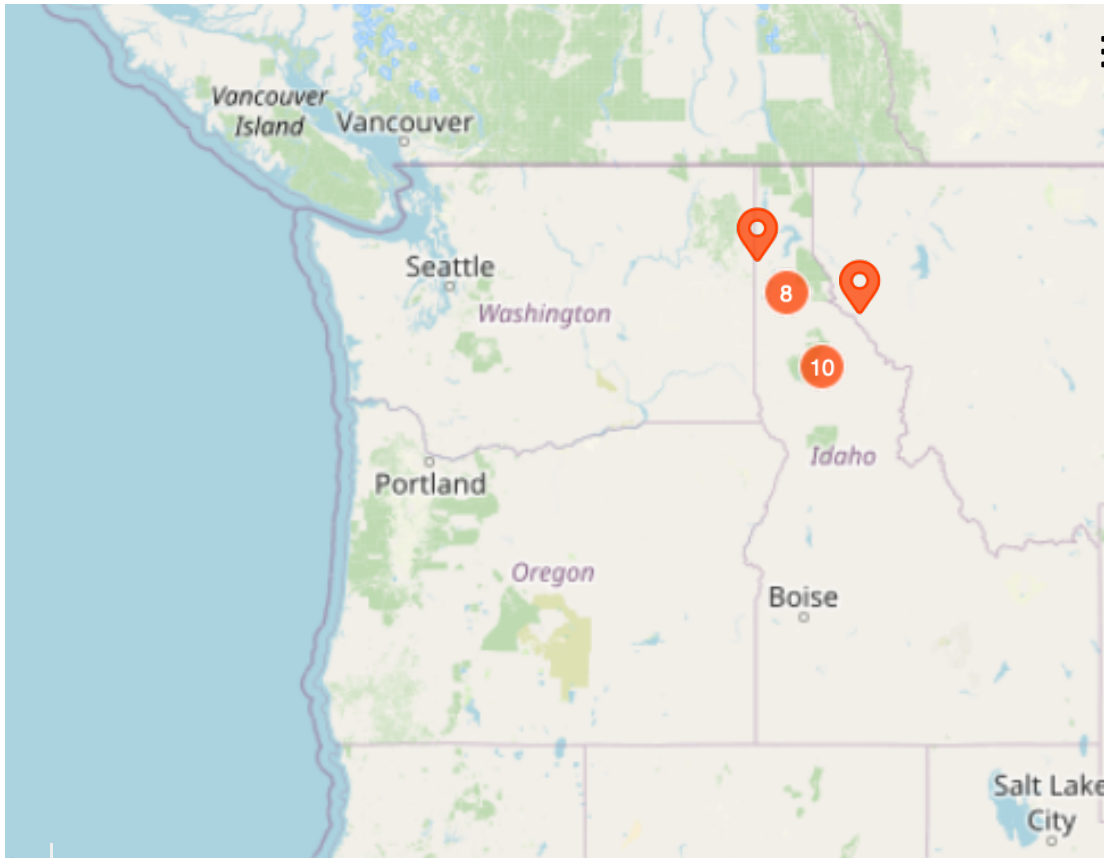
DNA analyses included **Dermataceae**  
(Helotiales, Leotiomycetes)

Looking backwards ...

- Carbonized ascomata
- KOH reaction positive (magenta)
- Ascospores
- Asci
- ...



Photos: Paul Diederich



- Previously known **only from Europe**:
  - From Poland to Spain
  - Exclusively on *Abies alba*
- New records from **USA**
  - From Idaho, Montana and Washington
  - Exclusively on *Abies grandis*
  - Not found on other *Abies* species

For further reading:



## Fungal Systematics and Evolution

VOLUME 5  
JUNE 2020  
PAGES 139–149

[doi.org/10.3114/fuse.2020.05.09](https://doi.org/10.3114/fuse.2020.05.09)

**Phylogenetic placement and lectotypification of *Pseudotryblidium neesii* (Helotiales, Leotiomyces)**

A. Suija<sup>1\*</sup>, M. Haldeman<sup>2</sup>, E. Zimmermann<sup>3</sup>, U. Braun<sup>4</sup>, P. Diederich<sup>5</sup>

Thanks !